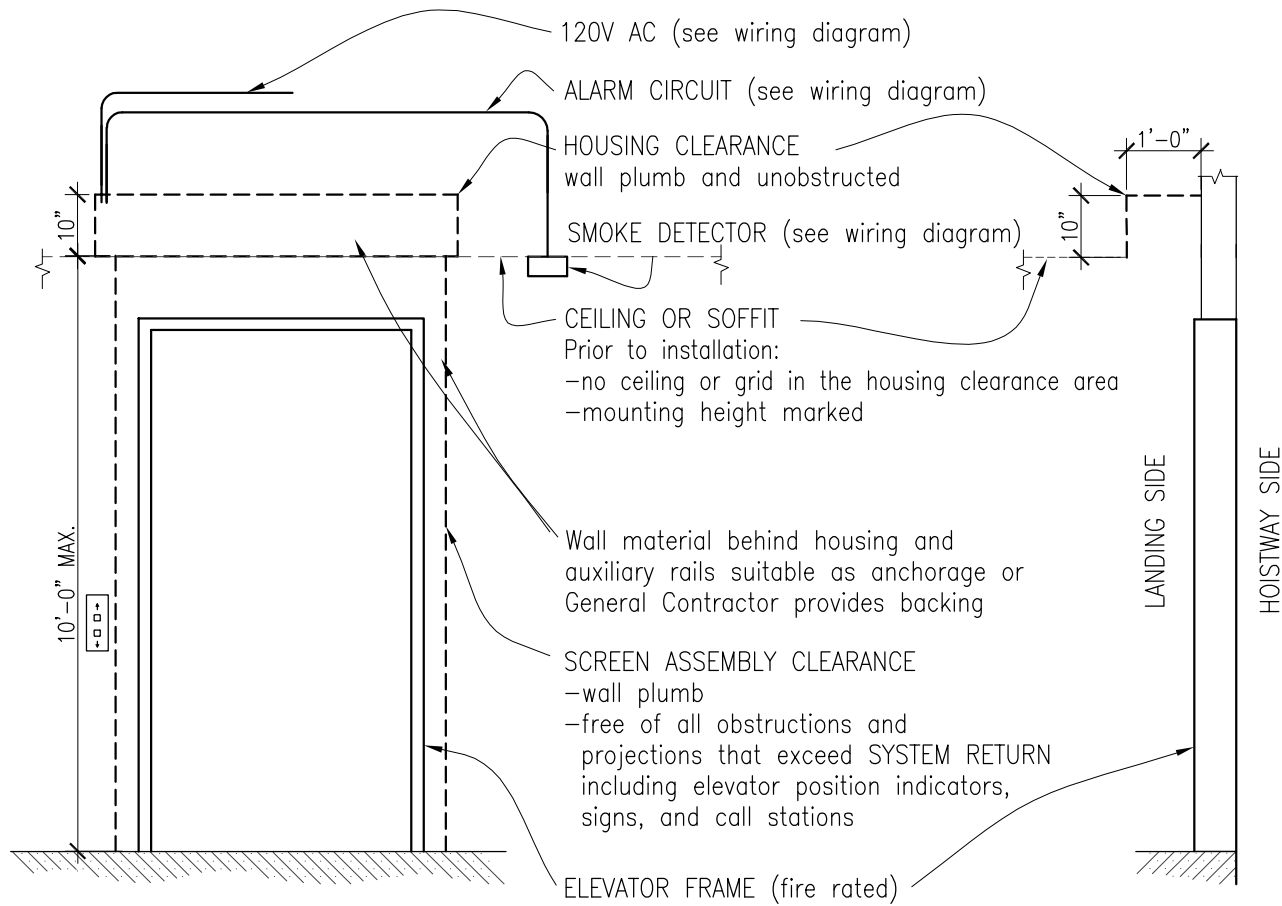


THESE DRAWINGS SHOW OUR INTERPRETATION OF THE PRINCIPAL PLANS AND SPECIFICATIONS. THEY ARE SUBMITTED AS CHECK PRINTS REQUIRING REVIEW AND POSSIBLE REVISIONS TO DETAILS AND/OR DIMENSIONS. TWO COPIES MUST BE RETURNED WITH SIGNATURE BEFORE FABRICATION OF MATERIALS CAN BEGIN. THIS SIGNATURE INDICATES PURCHASER'S FULL ACCEPTANCE OF DETAILS SHOWN AND THE PRODUCT IN CONFORMANCE TO SAME. THESE DESIGNS AND DRAWINGS ARE THE EXCLUSIVE PROPERTY OF SMOKE GUARD, INC. AND ARE NOT TO BE USED OR DUPLICATED WITHOUT PERMISSION, COPYRIGHT 2007, ALL RIGHTS RESERVED. NEITHER SMOKE GUARD NOR INSTALLER IS RESPONSIBLE FOR ONGOING MAINTENANCE OR TESTING AFTER INSTALLATION AND ACCEPTANCE.



ELEVATION (view from landing)

SECTION

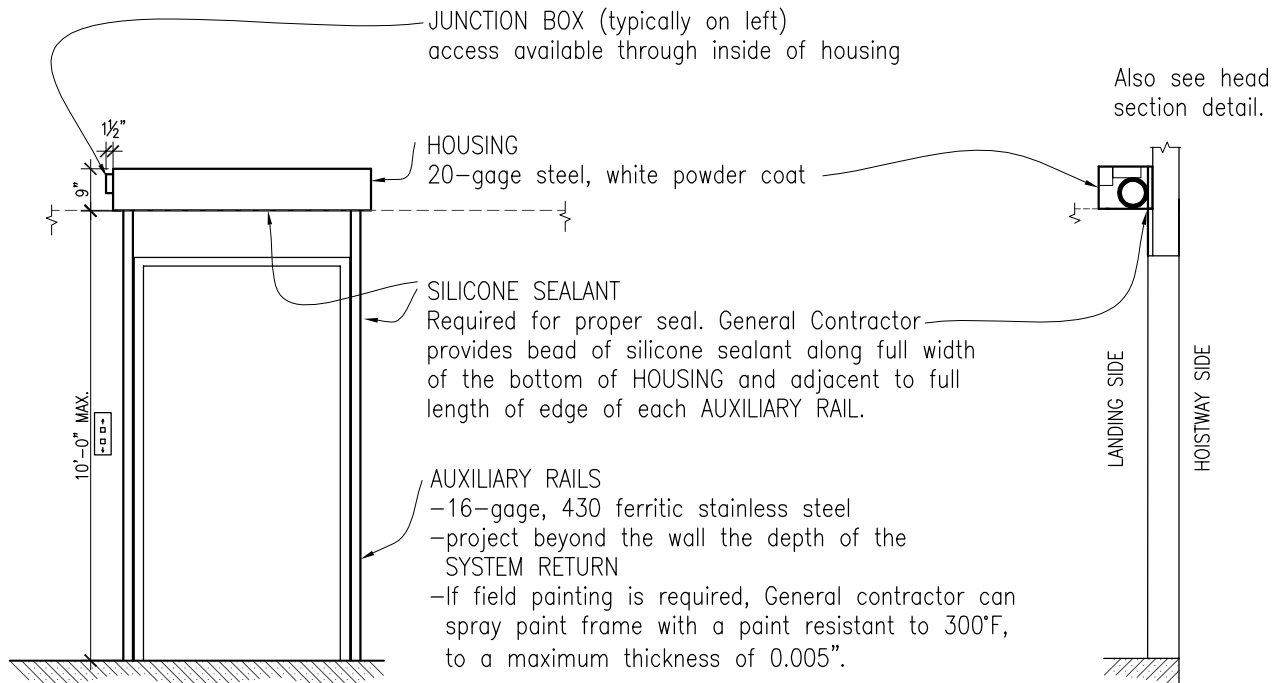
CONTRACTOR'S PREPARATION SCHEMATIC

Scale: NTS

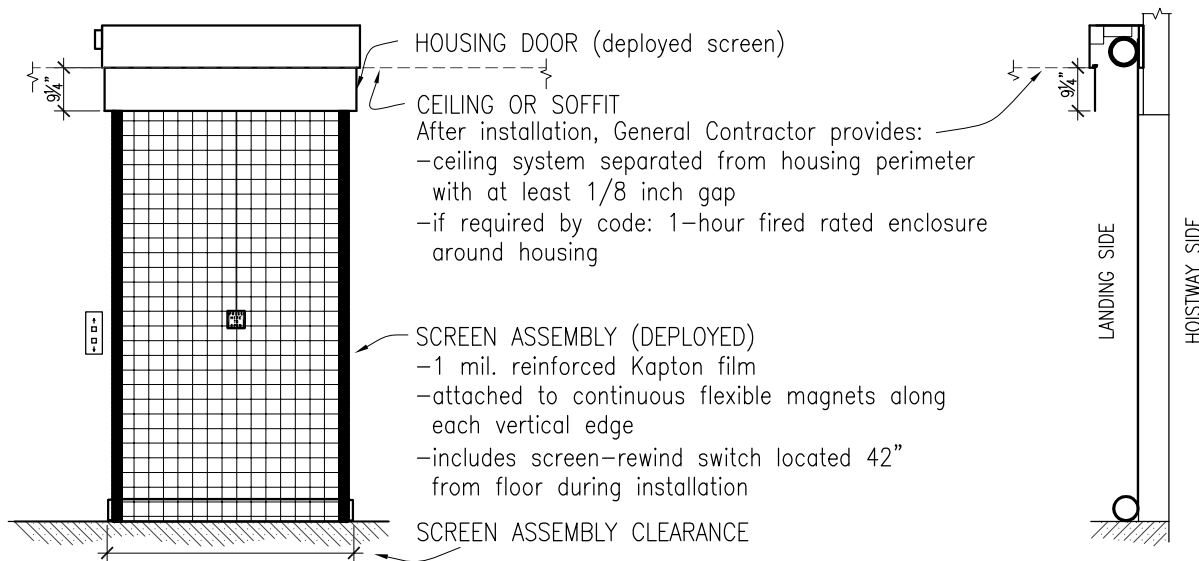
M600 SMOKE GUARD SYSTEM  
HIGH MOUNT WITH FULL AUXILIARY RAILS



DOC# 605-1A HG REV 23  
REVISION DATE: 2010-12-21



ELEVATION & SECTION: READY STATE



ELEVATION & SECTION: DEPLOYED STATE

THESE DRAWINGS SHOW OUR INTERPRETATION OF THE PRINCIPAL PLANS AND SPECIFICATIONS. THEY ARE SUBMITTED AS CHECK PRINTS REQUIRING REVIEW AND POSSIBLE REVISIONS TO DETAILS AND/OR DIMENSIONS. TWO COPIES MUST BE RETURNED WITH SIGNATURE BEFORE FABRICATION OF MATERIALS CAN BEGIN. THIS SIGNATURE INDICATES PURCHASER'S FULL ACCEPTANCE OF DETAILS SHOWN AND THE PRODUCT IN CONFORMANCE TO SAME. THESE DESIGNS AND DRAWINGS ARE THE EXCLUSIVE PROPERTY OF SMOKE GUARD, INC. AND ARE NOT TO BE USED OR DUPLICATED WITHOUT PERMISSION, COPYRIGHT 2007, ALL RIGHTS RESERVED. NEITHER SMOKE GUARD NOR INSTALLER IS RESPONSIBLE FOR ONGOING MAINTENANCE OR TESTING AFTER INSTALLATION AND ACCEPTANCE.

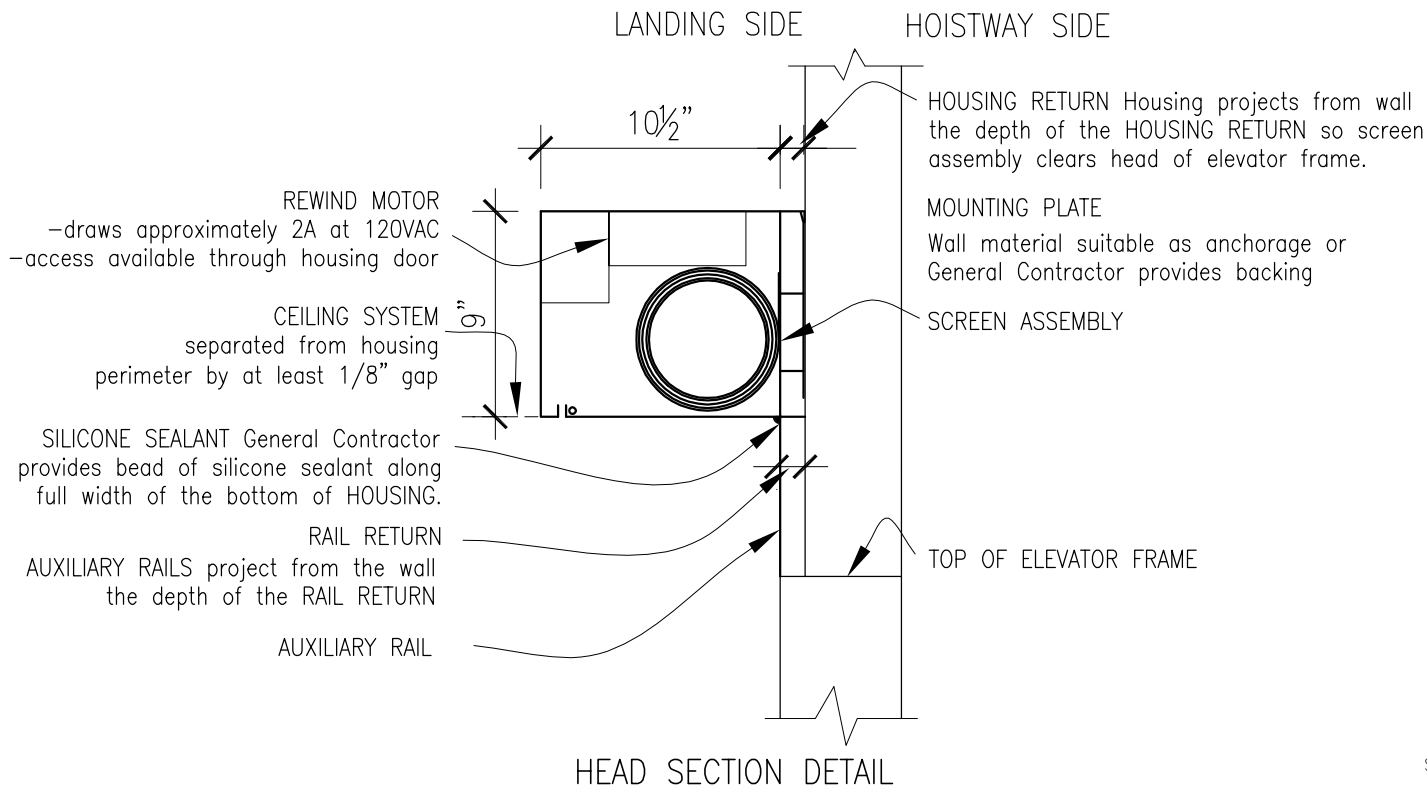


M600 SMOKE GUARD SYSTEM  
HIGH MOUNT WITH FULL AUXILIARY RAILS

DOC# 605-2A HG REV 23  
REVISION DATE: 2010-12-21

SHEET 2 OF 4

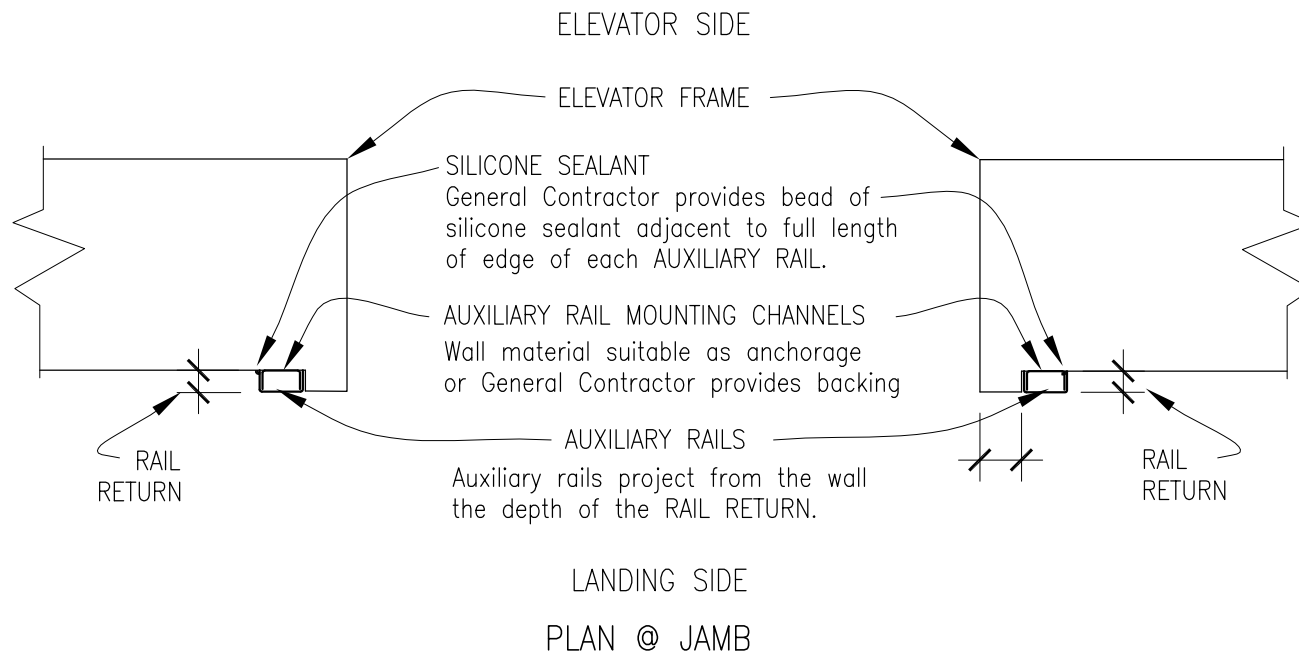
Scale: NTS



HEAD SECTION DETAIL

Scale: NTS

THESE DRAWINGS SHOW OUR INTERPRETATION OF THE PRINCIPAL PLANS AND SPECIFICATIONS. THEY ARE SUBMITTED AS CHECK PRINTS REQUIRING REVIEW AND POSSIBLE REVISIONS TO DETAILS AND/OR DIMENSIONS. TWO COPIES MUST BE RETURNED WITH SIGNATURE BEFORE FABRICATION OF MATERIALS CAN BEGIN. THIS SIGNATURE INDICATES PURCHASER'S FULL ACCEPTANCE OF DETAILS SHOWN AND THE PRODUCT IN CONFORMANCE TO SAME. THESE DESIGNS AND DRAWINGS ARE THE EXCLUSIVE PROPERTY OF SMOKE GUARD, INC. AND ARE NOT TO BE USED OR DUPLICATED WITHOUT PERMISSION, COPYRIGHT 2007, ALL RIGHTS RESERVED. NEITHER SMOKE GUARD NOR INSTALLER IS RESPONSIBLE FOR ONGOING MAINTENANCE OR TESTING AFTER INSTALLATION AND ACCEPTANCE.



PLAN @ JAMB

Scale: NTS

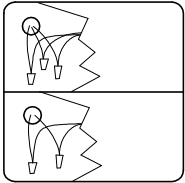


M600 SMOKE GUARD SYSTEM  
HIGH MOUNT WITH FULL AUXILIARY RAILS

DOC# 605-3A HG REV 23  
REVISION DATE: 2010-12-21

SHEET 3 OF 4

HOUSING JUNCTION BOX DETAIL  
(access available through inside of housing)

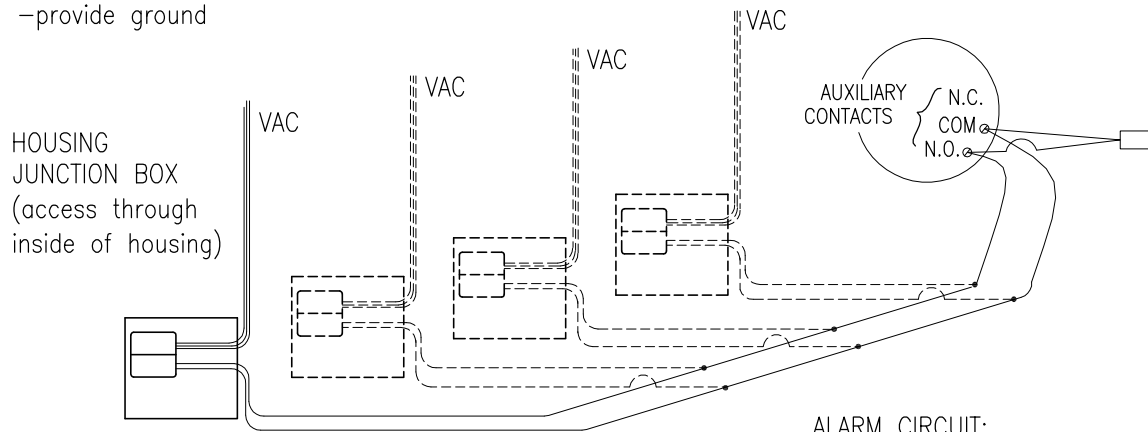


100-240 VAC by others  
green-yellow--ground  
blue--neutral  
brown--hot

LOW VOLTAGE CONNECTIONS  
-from smoke detector  
-by others

100-240VAC POWER (50/60 Hz, 5A max): For motor rewind/retraction of screen after deployment. By others:  
-provide conduit and wire  
-(after unit is installed) remove temporary plug and wire VAC to high voltage wires in the junction box on the side of the housing  
-provide ground

SMOKE DETECTOR (UL 268 compliant) By others:  
-provide a normally OPEN auxiliary contact that is activated when the smoke detector goes into alarm. This contact does NOT activate on general building alarm.  
-(when there are multiple-unit systems in a common area that are activated by a single smoke detector): wire up to 4 Smoke Guard units to a single smoke detector, IN PARALLEL. Multiple units on a common floor that are activated by the same smoke detector require alarm circuit wiring from the detector to each unit. The printed circuit board in each housing must see the end-of-line diode on the smoke detector.



END-OF-LINE DIODE:  
By others:  
-install end-of-line diode (furnished by Smoke Guard) at initiating device -in parallel with the normally open auxiliary contact.

HOUSING (side view)

This drawing illustrates that up to 4 housings can be wired, in parallel, to the same end-of-line diode at an initiating device (smoke detector) auxiliary contact.

ALARM CIRCUIT:  
By others:  
-provide an alarm circuit from the normally open auxiliary contact of the smoke detector to the low voltage wires in the junction box on the side of the housing, using stranded wires, in raceways or conduit  
-(after unit is installed) terminate the smoke detector wires to low voltage wires in the junction box on the side of the housing.

WIRING DIAGRAM (all electrical by others)

THESE DRAWINGS SHOW OUR INTERPRETATION OF THE PRINCIPAL PLANS AND SPECIFICATIONS. THEY ARE SUBMITTED AS CHECK PRINTS REQUIRING REVIEW AND POSSIBLE REVISIONS TO DETAILS AND/OR DIMENSIONS. TWO COPIES MUST BE RETURNED WITH SIGNATURE BEFORE FABRICATION OF MATERIALS CAN BEGIN. THIS SIGNATURE INDICATES PURCHASER'S FULL ACCEPTANCE OF DETAILS SHOWN AND THE PRODUCT IN CONFORMANCE TO SAME. THESE DESIGNS AND DRAWINGS ARE THE EXCLUSIVE PROPERTY OF SMOKE GUARD, INC. AND ARE NOT TO BE USED OR DUPLICATED WITHOUT PERMISSION, COPYRIGHT 2007, ALL RIGHTS RESERVED. NEITHER SMOKE GUARD NOR INSTALLER IS RESPONSIBLE FOR ONGOING MAINTENANCE OR TESTING AFTER INSTALLATION AND ACCEPTANCE.



M600 SMOKE GUARD SYSTEM  
HIGH MOUNT WITH FULL AUXILIARY RAILS  
DOC# 605-4A HG REV 23  
REVISION DATE: 2010-12-21

Scale: NTS